



This Week in Mt. Gretna



Celebrating our 13th anniversary of service to the Mt. Gretna Community ❖ Friday, September 2, 2011

Final Issue of the Season

Friday, September 2

- 9:00am Mt. Gretna Bird Club Walk; meet at CG parking lot; will continue meeting through the fall
- 10:00am Shuffleboard at the Campmeeting
- 10:00am Art Class, with Ellen Nicholas. Bring your own supplies. HC/HCA
- 10am-4pm Governor Dick Environmental Center open. EC/GDC
- 3-5pm Mt. Gretna Art Gallery open. CG
- 5:30pm Dinner Buffet, followed by "Show Biz Tonight" Musical Revue at the Timbers. \$26+. Reservations: 964-3601.
- 7:00pm Classical Conversation. PH/MAG
- 7:30pm **Program: Cottage Restoration & Remodeling: Tree & Landscape Restoration**, with arborist John Brewer. HP/HIS/CHP
- 8:00pm **Concert: The Three Altos.** \$23/19 in advance, \$26/19 day of concert. PH/MAG

Saturday, September 3

- 9-11:30am Mt. Gretna Area Historical Society Research Library open. MU
- 9:30am **Class: Set-Up Your Facebook Page** - Postponed; call 964-1830, leaving your name and phone number so we can reschedule this class with those who are interested.
- 1-4pm Governor Dick Environmental Center open. EC/GDE
- 1-4pm Mt. Gretna Area Historical Society museum open. MU
- 3-5pm Mt. Gretna Art Gallery open. CG
- 4:00pm **End of the Season Community Picnic.** Please bring a covered dish to share. Reservations required; please call 964-1830 by August 29. HP/CHP
- 5:30pm Dinner Buffet, followed by "Show Biz Tonight" Musical Revue at the Timbers. \$26+. *Closing performance of the season.* Reservations: 964-3601.
- 8:00pm **Concert: Gretchen Parlato.** \$25/18 in advance, \$28/21 day of concert. Youth discounts available. PH/MAG

Sunday, September 4

- 8:30am Worship. MC/UMC
- 10:00am **Worship Service: Rev. Dr. J. Stewart Hardy,** Retired, with soloist, Christyan Seay. PH/CHP
- 10:00am Worship Service. TB/UMC
- 1-4pm Governor Dick Environmental Center open, with Music on the Porch at 1pm. 964-3797. EC/GDC
- 1-4pm Mt. Gretna Area Historical Society open. MU
- 3-5pm Mt. Gretna Art Gallery open. CG
- 6:30pm Classical Conversation. PH/MAG
- 7:30pm **Concert: Schubert's Trout Quintet, with members of the Audubon Quartet,** joined by Carl Ellenberger, flute; Donovan Stokes, bass; and Seymour Lipkin, piano. \$23/19 in advance, \$26/19 day of concert. PH/MAG

Monday, September 5

- 10:00am Duplicate Bridge. Bring a partner/bag lunch. \$. 274-1553. FH/DBC
- 3-5pm Mt. Gretna Art Gallery open. CG
- 6:30pm Mt. Gretna Lake closes for the season
- 9:00pm Mt. Gretna Miniature Golf closes for the season
- 9:00pm The Jigger Shop closes for the season
- 9:30pm The Gretna Emporium closes for the season

Wednesday, September 7

The Timbers resumes regular hours, Wed-Sat, 5:30-9:00pm

Friday, September 9

LeSorelle Porch & Pantry

returns to regular hours 8am - 1pm Friday through Sunday

Saturday, September 10

- 6am Breakfast with the Birds; bring your binoculars, walk to the tower and see migrating birds. Reservations required: governordick@hotmail.com or 964-3808. EC/GDC
- 9am Meditation Hike (2-3miles); reserve as noted above.
- 4-10pm Mt. Gretna Volunteer Fire Company Pig Roast
- more inside -

Our thanks to the Mt. Gretna Arts Council for compiling and producing the Summer Calendar/directory, from which the bulk of this information is drawn. Advertising and donations underwrite the production costs of the calendar. Tax-deductible donations, of any amount, are most appreciated and can be forwarded to the "Mt. Gretna Arts Council," PO Box 513, Dept. TWIMG, Mt. Gretna, Pennsylvania 17064-0513.

"This Week in Mt. Gretna" is produced by Lightkeeper Consulting (964-1866 or info@lightkeeper.net), in association with the Mt. Gretna Arts Council and this publication's advertisers; **also available by free subscription via email by request.** Weekly advertising space is available; contact Lightkeeper Consulting.



Sunday, September 11

9:00am Fitness Hike: a quick-paced 4+ mile hike. Reservations required: governordick@hotmail.com/964-3808. EC/GDE

Tuesday, September 23

7:00pm No Light Night Hike. Reservations required: governordick@hotmail.com or 964-3808. EC/GDE

Thursday, September 25

6:30pm Governor Dick Environmental Center Volunteer Recognition Night; please RSVP by 9/17. 964-3808. ED/GDE

Saturday, October 1

9:00am Experience Nature 2-3 mile Hike. Reservations required: governordick@hotmail.com or 964-3808. EC/GDC

Sunday, October 2

9:00am Fitness Hike (see 9/11 listing) EC/GDC

2:00pm The Timelessness of Governor Dick Mt. Gretna, historical presentation. Reservations required: governordick@hotmail.com or 964-3808. EC/GDC

Tuesday, October 4

12pm Mt. Gretna Winterites: catered luncheon by Becky Briody, Chef on the Go, \$12; program by Eleanor Sarabia on her latest dollhouse; for reservations/information, call Donna Kaplan at 964-2174. FH/WIN

Saturday, October 8

12-5pm Mt. Gretna Volunteer Fire Company Block Shoot

6:00pm Smiles of an Autumn Night: The Annual Gretna Theater Gala at the Hotel Hershey. Cocktails, silent and live auctions, dinner and entertainment. For more information, call Renee Krizan at 964-3322.

Sunday, October 9

7:30pm Gretna Music presents SF Jazz at Leffler Chapel, Elizabethtown College. \$39/29/19 plus student prices. 361-1508.

Thursday, October 13

9:30pm Autumn Homeschool Field Day. Reservations required: governordick@hotmail.com or 964-3808

Monday, October 17

7:30pm Gretna Music presents English Concert at Leffler Chapel, Elizabethtown College. \$30/24/18 plus student prices. 361-1508.

Saturday, October 28

6:30pm Parade formation at the Jigger Shop

7:00pm Mt. Gretna Halloween Parade

Tuesday, November 1

1:00pm Mt. Gretna Winterites: Ireland Travelogues, with Peggy McGuire and Peggy O'Neil. For reservations and information, call Donna Kaplan at 964-2174. FH/WIN

Friday, November 4

7:00pm November Nocturne: Bonfire at the Tower. \$3 per person/\$10 per family. Reservations required: governordick@hotmail.com or 964-3808. EC/GDC

Sunday, November 6

8-12pm Mt. Gretna Volunteer Fire Company Breakfast Buffet

Saturday, November 12

8am Bouldering Meet. First competitive event held here. For more information/reservations (required): governordick@hotmail.com or 964-3808. EC/GDC

12-2pm Mt. Gretna Volunteer Fire Company Soup Cookoff

Sunday, November 13

9:00am Fitness Hike (see 9/11 listing) EC/GDC

7:30pm Gretna Music presents Intercultural Journeys at Leffler Chapel, Elizabethtown College. \$25/18/15 plus student prices. 361-1508.

Sunday, November 20

10:00am DVOA Orienteering Meet, competitive or just for fun. Reservations required: governordick@hotmail.com or 964-3808. EC/GDC

Tuesday, November 29

7:30pm Gretna Music presents The Canadian Brass at Leffler Chapel, Elizabethtown College. \$20-\$40. 361-1508.

Saturday, December 3

7:30pm Gretna Music presents Lionheart at Leffler Chapel, Elizabethtown College. \$20-30 plus student prices. 361-1508.

Tuesday, December 6

12:00pm Mt. Gretna Winterites: Covered Dish Holiday Luncheon. For reservations and information, call Donna Kaplan, 964-2174. FH/WIN

Saturday, December 10

11:30am Lunch with Santa Claus at the Mt. Gretna Volunteer Fire Company

1:30pm Christmas Scavenger Hike. Reservations required: governordick@hotmail.com or 964-3808. EC/GDC

Tuesday, February 7

1:00pm Mt. Gretna Winterites: Meet the Farmer, with Casey Specht, Community Sustainable Agriculture (CSA). For reservations and information, call Donna Kaplan, 964-2174. FH/WIN

Saturday, February 18

7:30pm Gretna Music presents Dance I: Piffaro, the Renaissance Band at Leffler Chapel, Elizabethtown College. \$15-\$25, plus student prices. 361-1508.

Saturday, March 3

7:30pm Gretna Music presents Dance II: Beethoven and Schubert Have a Ball, with the Momenta Quartet at Leffler Chapel, Elizabethtown College. \$15-25, plus student prices. 361-1508

Tuesday, March 7

1:00pm Mt. Gretna Winterites: Rescue Greyhounds. For reservations and information, call Donna Kaplan, 964-2174. FH/WIN

Saturday, March 17

7:30pm Gretna Music presents Dance III: Pablo Ziegler Trio for Nuevo Tango at Leffler Chapel, Elizabethtown College. \$15-25, plus student prices. 361-1508.

Saturday, March 31

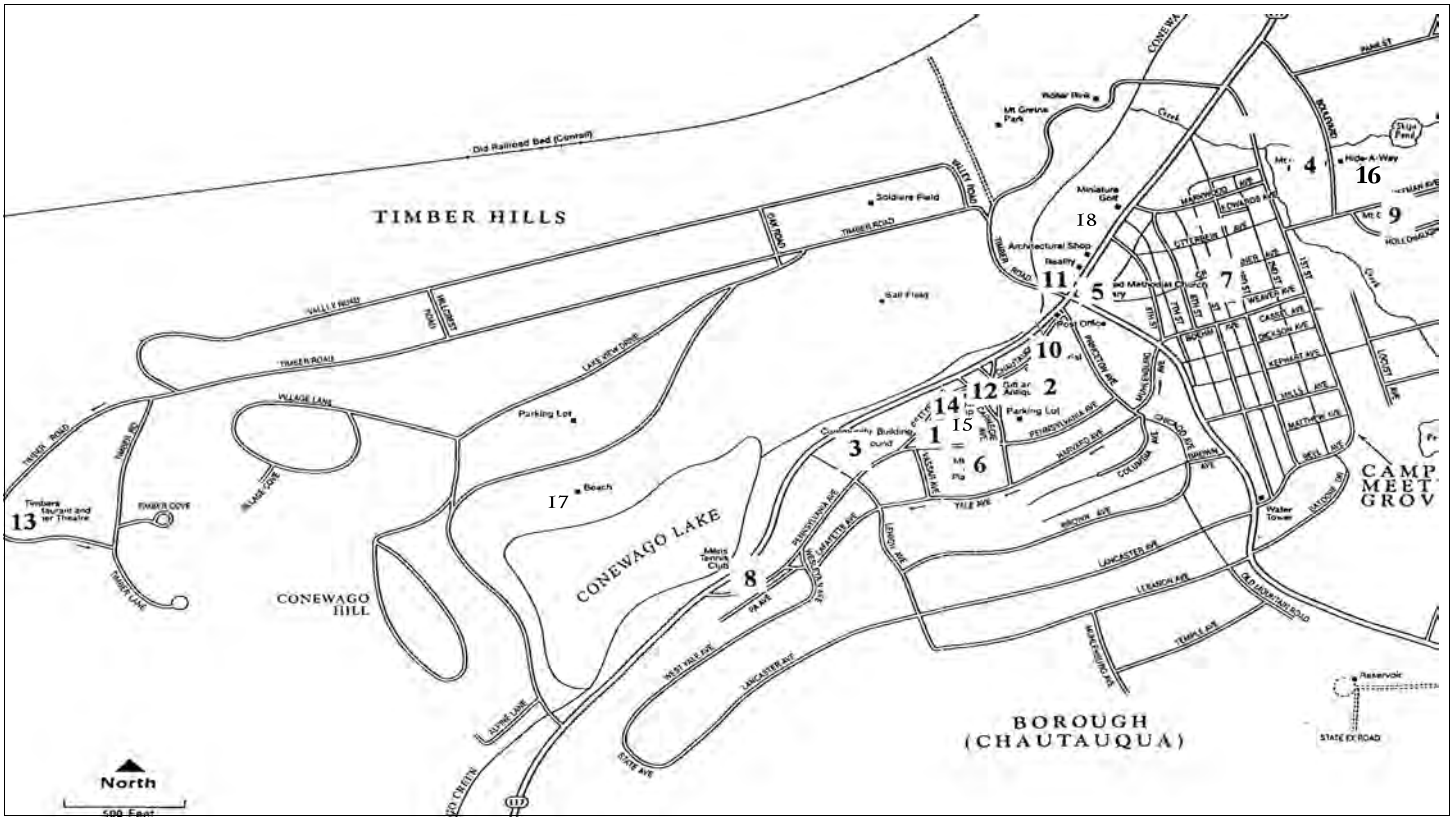
7:30pm Gretna Music presents Dance IV: Stravinsky's Rite of Spring, with World Premiere Choreography at Leffler Chapel, Elizabethtown College. \$17-27, plus student prices. 361-1508.

Tuesday, April 3

1:00pm Mt. Gretna Winterites: Jack Brubaker speaks about his new book, The Massacre of the Conestogas; book sale and signing; For reservations and information, call Donna Kaplan, 964-2174. FH/WIN

Governor Dick Environmental Center is open Thursday & Friday from 10am-4pm, Saturday & Sunday, from 1-4pm. November, only open on weekends through November 20. Re-opening in March.

Zumba at the Mt. Gretna Fire Hall with Janice Hall-Balmer continues year 'round. Monday at 8am, Zumba Gold \$5; Wednesday at 8am, Zumba \$5; T/T 5:45pm Zumba Toning \$3, followed by Zumba \$5 at 6:15pm. Call Janice at 507-9249 for more information.



MT. GREटना MAP - KEY:

- | | | |
|---|---|--|
| 1 - Hall of Philosophy | 9 - Mt. Gretna Inn; Heights Community Building immediately behind Inn | 12 - The Gretna Emporium |
| 2 - Chautauqua grounds | 10 - Le Sorelle Porch & Pantry Restaurant, Mt. Gretna Art Gallery (entrance on porch facing park area); Mt. Gretna Realty; M.H. Willeman Drafting & Design; Jonestown Bank & Trust Co. ATM, on Chautauqua Drive | 13 - The Timbers |
| 3 - Chautauqua playground | 11 - Mt. Gretna Pizzeria and Gretna Computer Consulting | 14 - The Jigger Shop |
| 4 - Mt. Gretna Fire Hall | | 15 - Mt. Gretna Information Center |
| 5 - Mt. Gretna Library | | 16 - Mt. Gretna Hide-A-Way |
| 6 - The Playhouse; Mt. Gretna Area Historical Society | | 17 - Mt. Gretna Lake & Beach |
| 7 - The Tabernacle | | 18 - La Cigale and Mt. Gretna Miniature Golf, and behind it, Mt. Gretna Roller Rink |
| 8 - The Tennis Courts | | Governor Dick Environment Center - south on Pinch Road (parallels Old Mountain on map) |

Program/Activity Location Codes (Two letters):

- | | | |
|-------------------------------------|-------------------------------|--|
| CG*Chautauqua grounds | HC*Heights Community Building | MU*Mt. Gretna Area Historical Society Museum |
| CP*Chautauqua playground | HP*Hall of Philosophy | PH*Playhouse |
| EC*Governor Dick Environmental Ctr. | LB*Mt. Gretna Library | TB*Campmeeting Tabernacle |
| FH*Mt. Gretna Fire Hall/parking lot | MC*Methodist Church | TC*Tennis Courts/Men's Club Grounds |

Sponsoring Organization Codes (Three letters):

- | | | |
|---|--|---------------------------------------|
| ACN*Arts Council | DBC*Duplicate Bridge Club | LIB*Mt. Gretna Community Library |
| BBF*Bible Festival/Summer at the Tabernacle | GDE*Governor Dick Environment Center | MAG*Music at Gretna |
| CHA*Chautauqua Association | GMC*Gretna Men's Club | OAS*Outdoor Art Show |
| CHP*Chautauqua Summer Programs | GTH*Gretna Theatre/Productions | UMC*United Methodist Church |
| CIC*Cicada Festival | HCA*Heights Community Association | VFC*Mt. Gretna Volunteer Fire Company |
| CMP*Campmeeting Association | HIS*Mt. Gretna Area Historical Society | WIN*Mt. Gretna Winterites |

Special thanks to the Pennsylvania Chautauqua's summer intern, Ezra Minter, who staffed the Mt. Gretna Information Center for the summer; Ezra, you were invaluable to our community!

mt. gretna

Arts council

Calendar of Events, Information Center, Summer Premiere, Scholarship Program, Playhouse Operating Committee, and contributions to Mt. Gretna Non-Profit Organizations

Serving the Arts and Community in Mt. Gretna



Bank on a smile:

In Mt. Gretna, an ATM is available at LeSorelle on Chautauqua Drive.

Member FDIC

Coupon worth \$2 off at



Mt. Gretna Lake & Beach
Open 11:30am - 6:30pm daily through Labor Day

This summer's new musical: "Show Biz Tonight"



You'll stroll down Musical Lane, in this two act revue, with spectacularly arranged music to enjoy.

July 12th - September 3rd
Tuesday - Saturday evenings
Evening buffet/show from \$26; Wednesday and select Saturday matinees
also serving dinner year 'round

964 - 3601

Summer at the Tabernacle



Looking forward to sharing the 2012 season with you!

All performances in the Tabernacle at 7:00pm unless otherwise noted

We Live, Love, List & Sell Mt. Gretna!



Rhoda Long
(717) 304-0248



Emi Snavelly
(717) 270-1515

Give us a call today!



Brownstone Real Estate Co.
(717) 279-6222

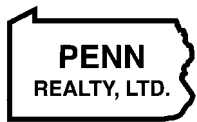


The Mt. Gretna Cicada Festival

Thank you for your support of our performances and the playreadings!
To be added to our 2012 mailing list, call:

964-2046

Located in the
♥
of Mt. Gretna



964-3800

Serving your real estate needs in Mt. Gretna for over 20 years

www.pennrealtyltd.com



GRETNA THEATRE

Gretna Theatre Annual Gala
Saturday, October 8
at the Hotel Hershey

www.gretnatheatre.com

Mt. Gretna



HIDE-A-WAY
Restaurant - Tavern-Deck

Sunday - Thursday
11:30am-10pm
Friday - Saturday
11:30am - 11pm

964-3170



From Provence to You
French Provincial Linens and More

Summer Hours:
Tuesday - Sunday 11am - 5pm

Rt. 117, Mt. Gretna

964 - 3313

www.lacigale-usa.com



GRETNA MUSIC

361-1508

All performances in August

Sept. 2 The Three Altos
Sept. 3 Gretchen Parlato Band
Sept. 4 Schubert's Trout Quintet, with members of the Audubon Quartet, Carl Ellenberger, flute, Donovan Stokes, bassist, & Seymour Lipkin, pianist

View the complete schedule at
www.gretnamusic.org

Gretna Emporium



Full of Charm & Character
(located next to the Finger Shop)

964-1820

OPEN DAILY 11:30 AM-9:30 PM
MEMORIAL DAY TO LABOR DAY

LeSorelle
Porch and Pantry RESTAURANT

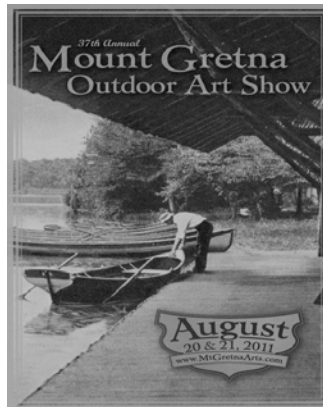
Summer Hours:

Memorial Day until Labor Day
Tuesday - Sunday 8 am to 1 pm

Winter Hours:

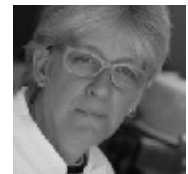
Labor Day until Memorial Day
Friday - Sunday 8am to 1pm

106 Chautauqua Drive
Mount Gretna, PA 17064
717.964.3771
www.porchandpantry.com



Thanks the Linda Bell, Bill Care & the Art Show team, several hundred volunteers strong!

Chef on the Go



From Casual to Elegant Affairs

Dinner Parties, Receptions,
Special Occasions by
Rebecca Briody

964-3541

To add your event to the schedule or advertise, please contact Kathy Snavelly at Lightkeeper Consulting - (717) 964-1866 or info@lightkeeper.net.